

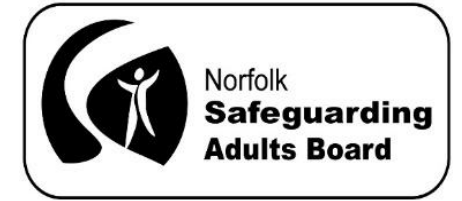
# NSAB: Norfolk Safeguarding Adults Board

---

Who we are and what we do

Updated Feb 2023

# The Safeguarding Adults Network



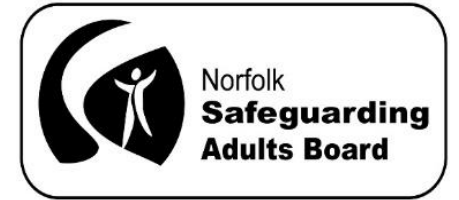
Norfolk Safeguarding Adults Board (**NSAB**) oversees and coordinates the effectiveness of the safeguarding work of its member and partner agencies.

The 3 statutory members of NSAB are: Norfolk County Council (NCC), Norfolk Constabulary, and NHS Norfolk & Waveney Integrated Care Board (ICB).

NCC has the lead responsibility for carrying out safeguarding enquiries under **s42 Care Act** but in a multi-agency context.

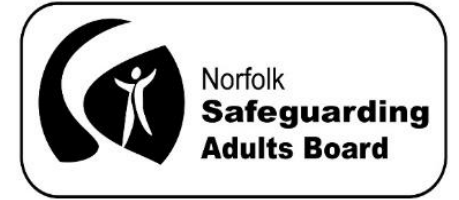
**Safeguarding is everybody's responsibility** - see how we all work together around the person...

# Safeguarding Adults Boards



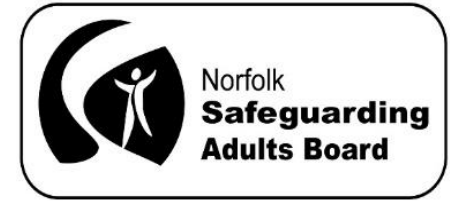
- Safeguarding Adults Boards (SABs) were made statutory in the Care Act (section 43), although Norfolk has had one longer than that; primary agencies are the local authority (NCC), the NHS and the police – it is a strategic board – director level membership
- Main objective is to ensure local safeguarding arrangements and partners act to help and protect adults in its area who meet the criteria under s42 Care Act
- The board has a key responsibility for **protecting adults from abuse, reducing the risk of abuse** and supporting people to **stop abuse** where it happens.

# SABs have three core duties:



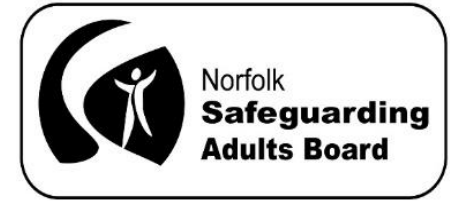
- To develop and publish a **strategic plan** setting out how they will meet their objectives and how their member and partner agencies will contribute
- To publish an **annual report** detailing how effective their work has been
- To commission **safeguarding adult reviews** (SARs) for any cases which meet the criteria for these

# Norfolk SAB

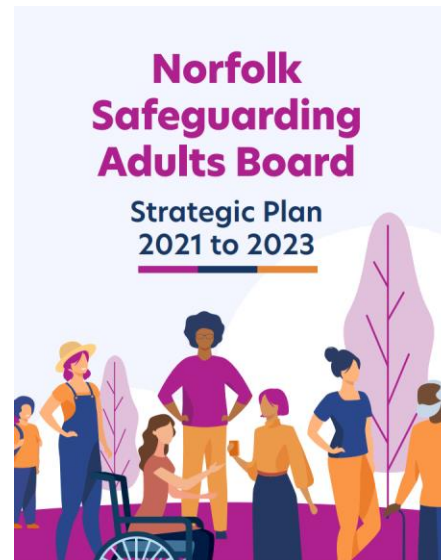
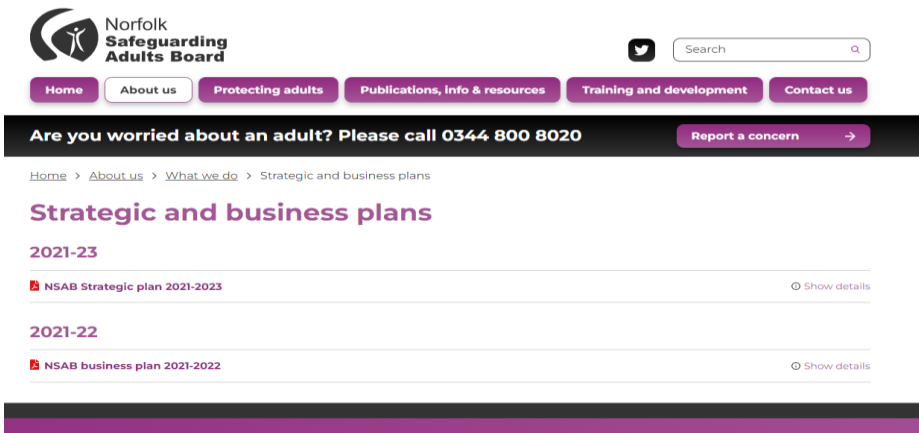


- Meets every 2 months – minutes are published
- Independent Chair and business team funded by the partnership
- Made up of partner agencies *including* senior representatives from: acute hospitals, adult social services, police, ICB, NSFT, Norfolk Fire & Rescue, Office of the Police and Crime Commissioner for Norfolk, district councils, probation service, public health, University of East Anglia, Healthwatch, voluntary sector and a local councillor.
- Assurance function – asks partners and other agencies to report on specific issues / work / initiatives in safeguarding adults

# Is NSAB part of the county council?



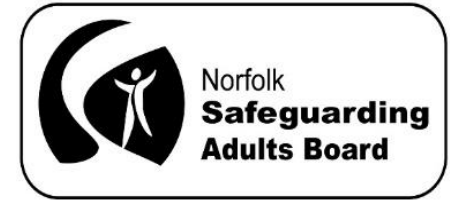
- NSAB is a multi-agency strategic partnership - it is *not part of NCC*
- But NCC is one of the statutory funding partners and does 'host' the Business Team as someone needs to employ us 😊
- We have our own website, where we publish things like our strategic plan & business plan



Norfolk Safeguarding Adults Board (NSAB) Business Plan for April 2021 to March 2022

Strategic Aim 1 – Prevention and engagement   Business Priorities April 2021 – March 2022					
No	Topic	Action/measure	Lead	Timescale	Achievements
1.1	Modern Slavery & Human Trafficking (MS&HT)	Collaborate with Anti-Trafficking Network Co-ordinator to support identification and embedding of processes within partner agencies and raise awareness across Norfolk  Attend Norfolk Anti-Slavery Network quarterly meetings  Modern Slavery messages shared via social media, news and Locality Safeguarding Adults Partnerships, including webinars	Board Manager (BM) / Deputy Board Manager (DBM)	March 2022	NSAB website has a dedicated page for MS&HT  LSAP webinars on modern slavery and exploitation (23-06-2021 and 21-09-2021) – 91 people attended the exploitation webinar  BM and DBM continue to attend Norfolk Anti-Slavery Network meetings
1.2	Learning disabilities and autism summit – facilitating system wide discussion in relation to safeguarding	To support the development of an arm's-length 'Coalition for Change' which will facilitate a summit on safeguarding issues for people with learning disabilities and autism, to feed into work on responses to the	TBC	Spring/Summer 2022	Meeting with Adult Social Care commissioning colleagues in Sept 2021  Links to recommendations B & C in SAR (actions)

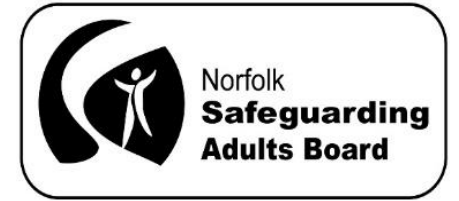
# Strategic Plan



The strategic intentions for our plan are grouped under three pillars, with accountability and leadership running through them all:

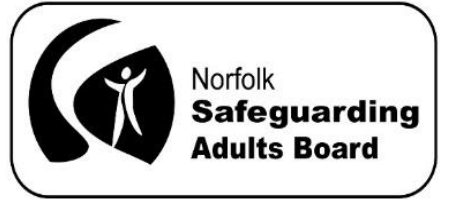
1. Preventing abuse and neglect
2. Managing and responding to concerns and enquiries about abuse and neglect
3. Learning lessons and shaping future practice

# NSAB Business Team

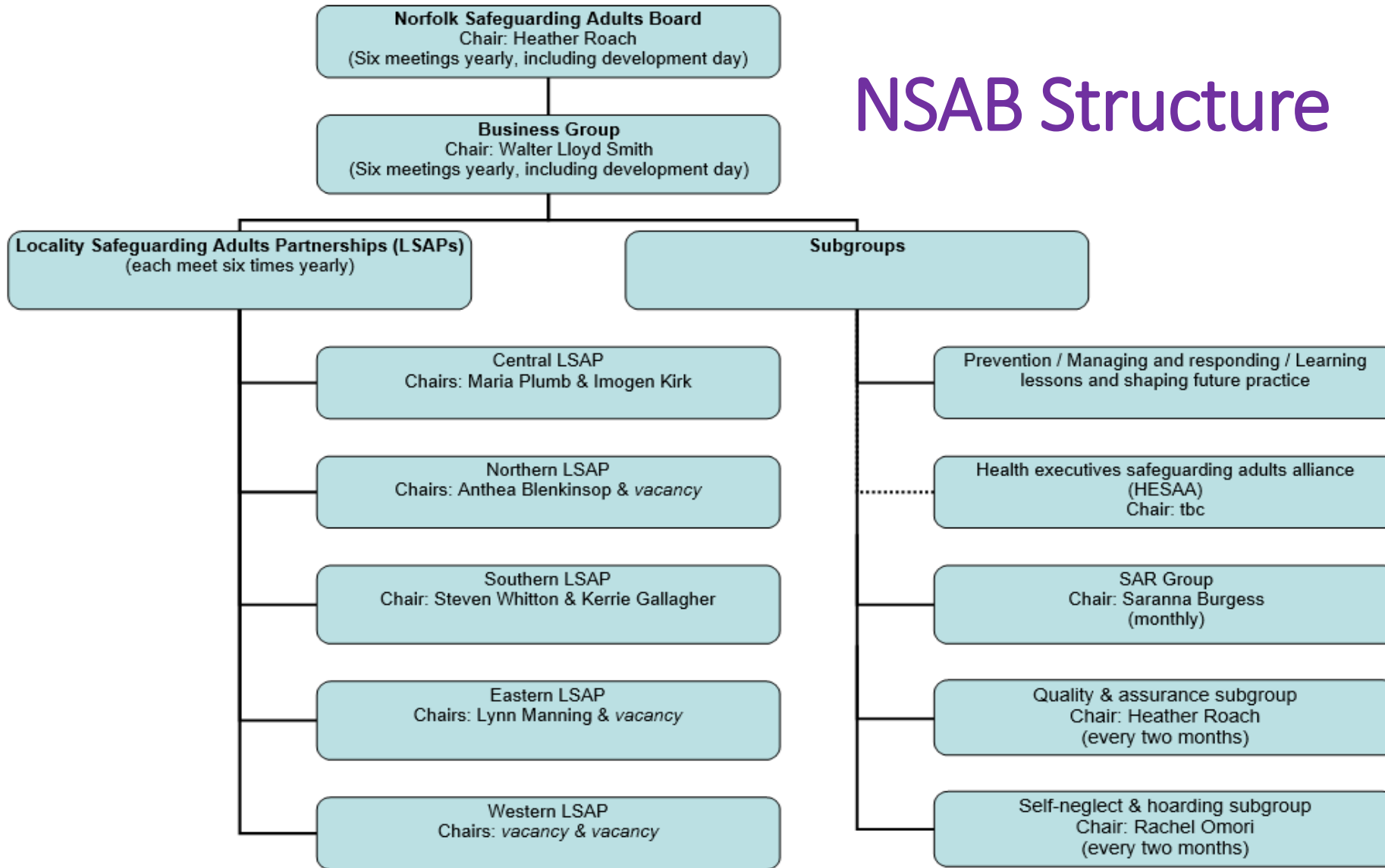


- Independent Chair: Heather Roach
- Business lead / Board manager: Walter Lloyd-Smith
- Deputy Board manager: Becky Booth
- Board co-ordinator: Andrea Smith
- Board co-ordinator: Petra Alford
- Comms officer: Nathan Jarvis (post shared with the NSCP)

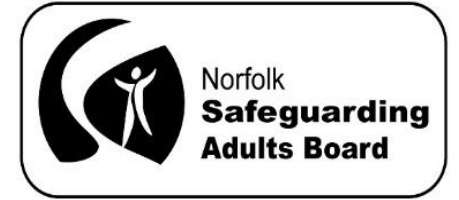




# NSAB Structure



# NSAB Subgroups

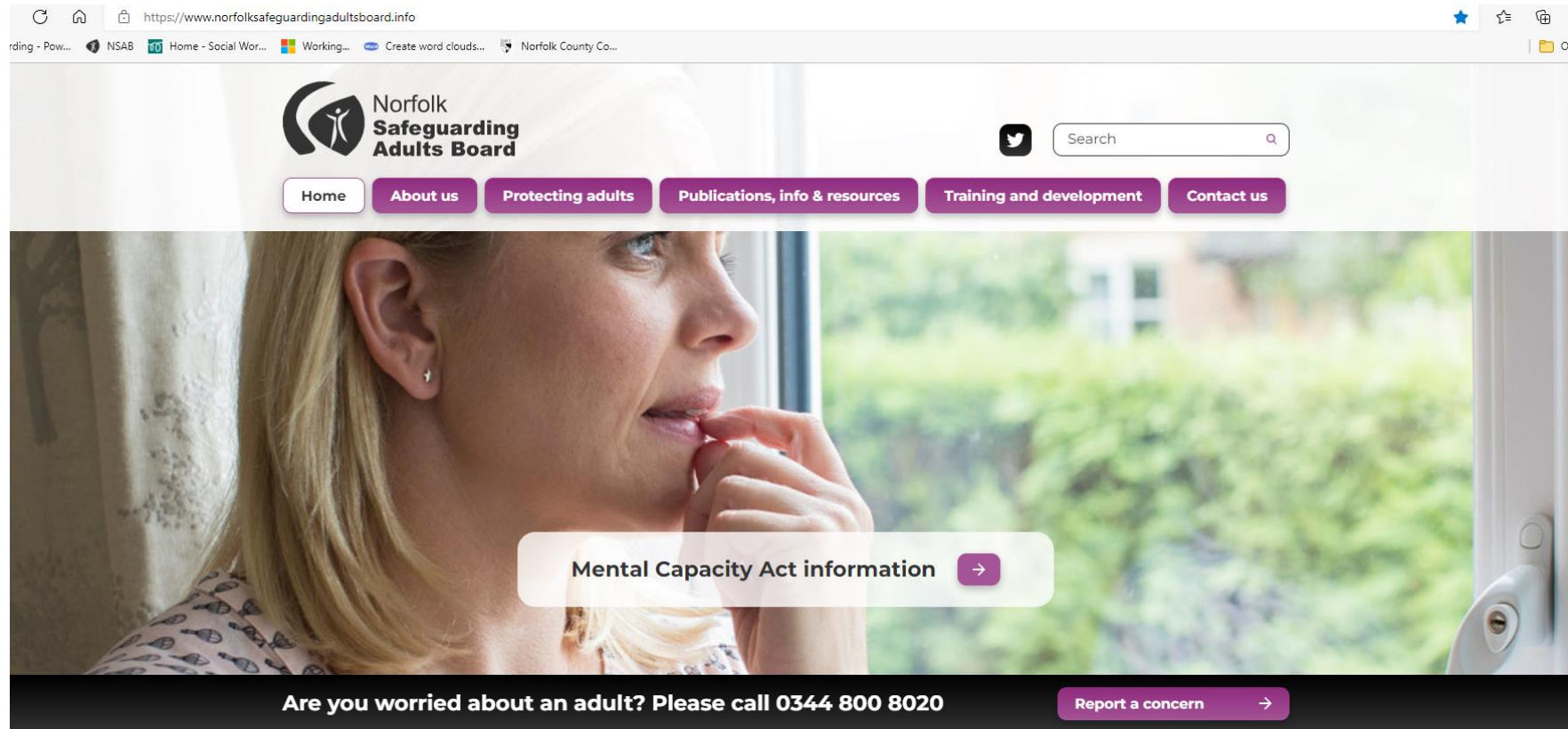
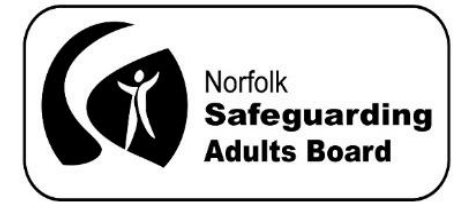


- **PML** – Prevention / Managing and responding / Learning lessons and shaping future practice
- **SARG** – Safeguarding Adult Review Group
- **HESAA** – Health Executives safeguarding adults alliance (stood down during pandemic, yet to be reinstated)
- **Self-neglect & Hoarding**
- **Quality & assurance**
- **LSAPs** – Locality Safeguarding Adults Partnerships

# Day to day...

- **Campaigns & resources to raise awareness** e.g. See Something..., Carers, Domestic Abuse and older adults; MCA prompt cards, roller banners; especially in seldom heard groups and communities
- **Guidance & training to support good practice** (e.g. 7MBs, multi-agency guidance, link with St Thomas Training, presentations to GPs, SW apprentices, provider forums)
- **Link work with and support a wide range of partners and groups** e.g. Norfolk Safeguarding Children Partnership (NSCP), Norfolk Community Safety Partnership, Office of the Police and Crime Commissioner
- **Website & social media:** development & maintenance of the website, analytics, Twitter feed and engagement, raising awareness of the safeguarding work in Norfolk

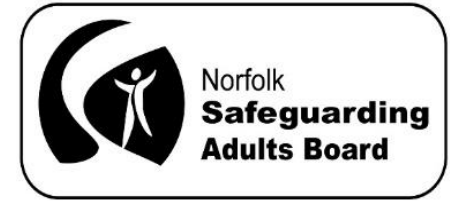
# NSAB website



## Norfolk Safeguarding Adults Board (NSAB)

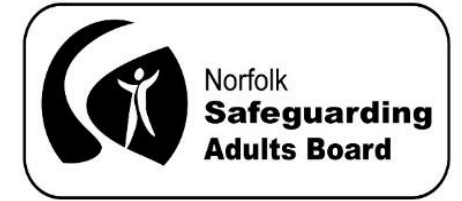
Safeguarding is preventing the physical, emotional, sexual, psychological and financial abuse of adults who have care and support needs, and acting quickly when abuse is suspected. It can also include neglect, domestic violence, modern slavery, organisational or discriminatory abuse.

# ...more of our day-to-day work



- Work at local, regional and national levels, including research projects
- Direct support to local councils to strengthen consistent approaches
- **SARs** although there is a chair of the SAR Group, and independent report writers lead the reviews, there is a huge amount of work involved managing referrals to the group, supporting and co-ordinating the actual reviews, and then following up recommendations and actions from those reviews
- **DHRs, complex cases, general queries**
- **Share information through networks** email updates, Walter's blog, newsletter, through the LSAPs

# For more info..



- Have a look at our **website** [Norfolk Safeguarding Adults Board \(NSAB\)](#)
- Follow us on **Twitter** <https://twitter.com/norfolksab> #NorfolkSAB
- Sign up for our **newsletter** via the link on the website

A screenshot of a newsletter sign-up form is shown. The form has a purple background. At the top, it says "Get the latest news from Norfolk Safeguarding Adults Board" in white. Below that, in smaller white text, it says "We'll email you about news and updates. [Find out more about how we use your information.](#)". There are two white input fields: "Name\*" and "Email Address\*". To the right of these fields is a black button with white text that says "Keep me updated" and a white right-pointing arrow.

- Read **Walter's Blog** each month [Board Manager's blog | Norfolk Safeguarding Adults Board](#)
- Come along to one of the **LSAPs!** [Locality Safeguarding Adult Partnerships \(LSAPs\) | Norfolk Safeguarding Adults Board](#)