

Modern Slavery is on your doorstep - spot the signs



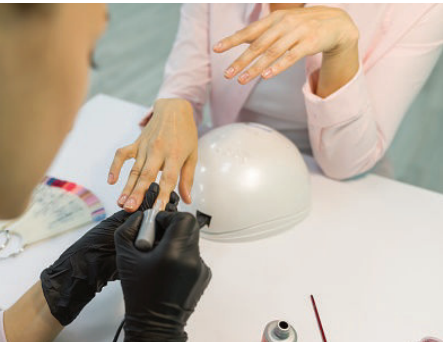
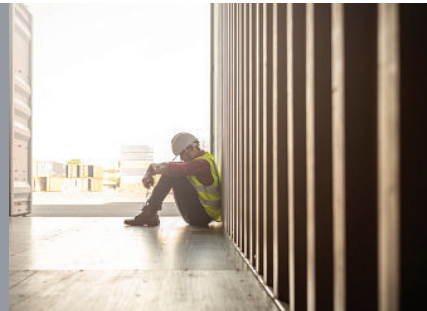
In the UK it's estimated that there are 100,000 people in Modern Slavery - we need your help to spot the signs and report it so we can tackle this hidden crime together.

In 2021: **143** Modern Slavery referrals were completed in Norfolk

71% of reported Modern Slavery cases involved women and girls

55% of victims in Norfolk were children

Source: Norfolk Constabulary



Norfolk Anti-Slavery Network brings together organisations from across the county to help victims escape Modern Slavery and bring perpetrators to justice. By reporting suspected cases of Modern Slavery, you are helping us to do this.



**NORFOLK
ANTI-SLAVERY
NETWORK**

Spotting the signs

Knowing how to spot the signs and report Modern Slavery and human trafficking is essential to tackling exploitation in Norfolk. Someone in slavery might:



- Appear to be under the control of someone else
- Reluctant to interact with others, such as lack of eye contact
- Appear frightened or withdrawn



- Show signs of physical or psychological abuse
- Have someone with them at all times/not allowed to speak



- Work excessively long hours
- Have frequent/many different visitors



- Fear of authorities
- No travel or identity documents that would allow them to travel
- Limited opportunities to move freely



- Few personal possessions
- Wear the same clothes day-in day-out

Spot it, report it

If you have concerns that someone is being exploited:

Call **08000 121 700** (national 24-hour helpline)

Report online at www.modernslaveryhelpline.org/report - a free confidential helpline with access to translation services for over 200 languages.

In an emergency, **call 999** - this number covers emergency police, fire and healthcare. If you need advice or support and it is not an emergency, **call 101**.



**NORFOLK
ANTI-SLAVERY
NETWORK**